

M.12.6A

APPENDIX: To the old long life and treasure (catch)

BEN JONON

SAMUEL WEBBE SENIOR(1740-1816)

Brisk

VOICE I
 To the old, to the old, long life and trea - sure,

VOICE II
 Long life and trea - sure, To the young, to the young, all health,

VOICE III
 To the young, all health, all health and plea - sure, to the

5
 to the old, long life and trea - sure, to the
 all health and plea - sure, to the young, all health and plea - sure,
 fair, their face With e - ter - nal grace, And the foul to be lov'd at lei - sure.

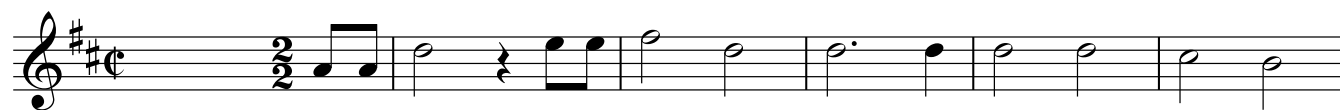
9
 old long life, to the old, long life and trea - sure, to the
 to the young, all health and plea - sure, to the young all health, to the
 To the fair, to the fair, to the

13
 old, long life, long life and trea - sure. II
 young, all health and plea - sure, to the young, all health and plea - sure. III
 fair, their face With e - ter - nal grace, And the foul to be lov'd at lei - sure. I

APPENDIX: To the old long life and treasure (catch)

BEN JONON

SAMUEL WEBBE SENIOR(1740-1816)

Brisk

To the old, to the old, long life and trea - sure, to the



old, long life and trea - sure, to the old long life, to the old, long life and



trea - sure, to the old, long life, long life and trea - sure. II

APPENDIX: To the old long life and treasure (catch)

VOICED
BEN JONON

SAMUEL WEBBE SENIOR(1740-1816)

Longlife and trea- sure, To theyoung, to the young, all health,

5 all health and plea - sure, to theyoung, all health and plea - sure, to the young, all

10 health and plea - sure, to the young all health, to the young, all health and

14 plea - sure, to the young, all health and plea - sure. III

APPENDIX: To the old long life and treasure (catch)

BEN JONON

SAMUEL WEBBE SENIOR(1740-1816)

To the young, all health, all health and pleasure, to the

5
fair, their face With e - ter-nal grace, And the foul to be lov'd at lei - sure. To the

10
fair, _____ to the fair, to the fair, their face With e -

14
ter - nal grace, And the foul to be lov'd at lei - sure.